

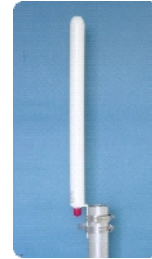
## 4.9 -5.875 GHz Omni “ Directional Base Station Antenna

### - MA-WO55-10

MARS 5.8 GHz Base Station Antenna provides a cost effective solution for large scale WLL, WLAN, ISM and Point-to-Multi Point applications. UV protected radome allowing for harsh environment installations. Antenna features stable performance with exceptional 10 dBi of gain.

Applications:

- MESH Networks
- Point-to-Point Applications



#### Specifications:

##### Electrical

Frequency range	4.9 - 5.875 GHz
Gain, typ.	10 dBi
VSWR, max.	4.9-5.15 GHz @2: 1 5.15-5.875 GHz @1.8:1
3 dB Beam-Width, H-Plane, typ.	360 °
3 dB Beam-Width, E-Plane, typ.	10 °
Polarization	Linear Vertical
Input power, max	50 Watt
Input Impedance	50 Ohm

##### Mechanical

Dimensions (HxDiameter)	330x 46 mm (16.5" x 1.3")
Weight	230 gr.
Connector	N-Type, Female
Radome	UV Protected, Plastic
Mount	2.5” Pole Mount (End) Attachment ( included)

##### Environmental

Operating Temperature Range	-40° C to +65° C
Vibration	According to IEC 60721-3-4
Wind Load	200 km/h (survival)
Flammability	UL94
Water Proofing	IP-65
Humidity	ETS 300 019-1-4, EN 302 085 (annex. A.1.1)
Ice and Snow	25 mm radial (survival)
Salt Fog	According to IEC 68-2-11
Service Life	> 10 years

Specifications subject to change without notice